

CHANGING CHAIN WINDER FROM RESTRICTED TO UN-RESTRICTED

The National Construction Code specifies various requirements for the prevention of falls from openable windows. The intent of these requirements is to limit the risk of a person (especially a young child) falling through an openable window.

These requirements are divided into two categories:

1. All windows where the potential fall is 4 m or more.
2. Windows in bedrooms of Class 1, 2, 3 and 4 buildings, and any room in Class 9b Early Childhood Centre where the potential fall is 2 m or more.

As standard, GP Glass supply chain winders restricted for all awning windows. GP Glass is not liable for any injuries or deaths caused by an un-restricted winder.

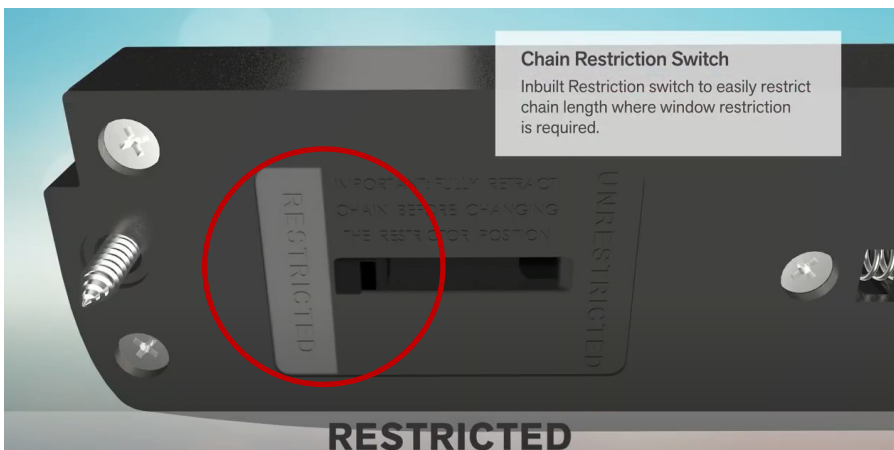
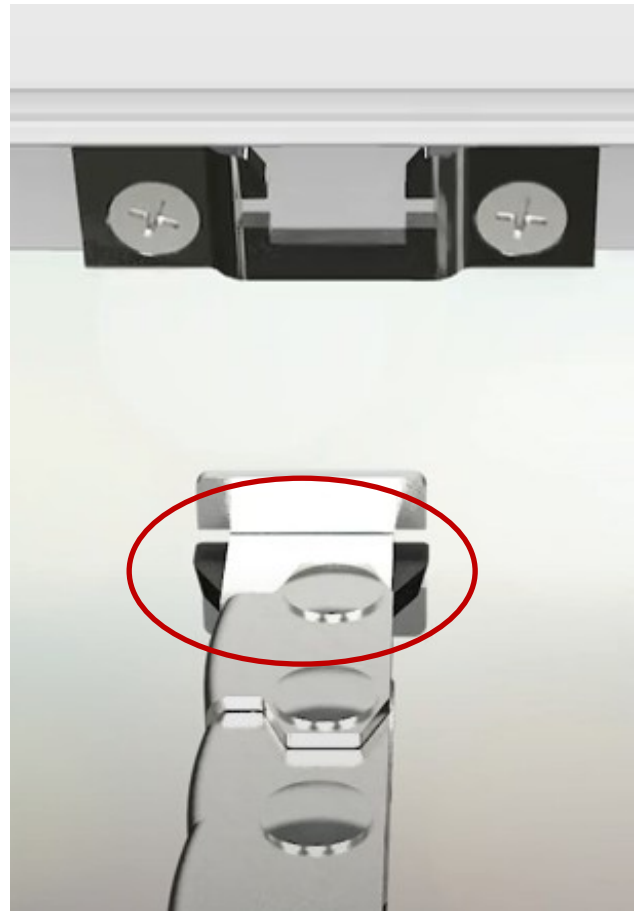
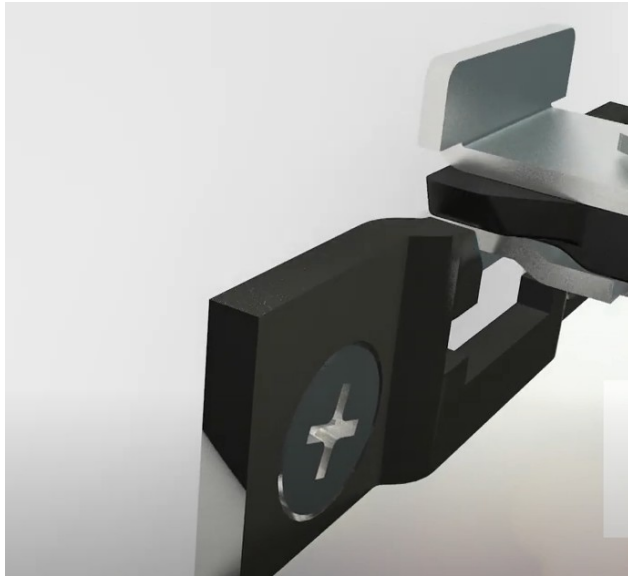
STEP 1:

Using a phillips head screw driver, remove the two screws at each end of the winder base



STEP 2:

Unclip the chain from the awning sash by squeezing in the black clips on either side of the chain and lifting the chain upwards simultaneously.



STEP 3:

Turn the chain winder base over and slide the switch over to UNRESTRICTED,

